

SHORT COMMUNICATIONS  
ENDOINFUNDIBULAPOLLIS DISTINCTUS R. TSCHUDY 1975,  
FROM THE UPPER CRETACEOUS FROM THE SOUTHERN PART  
OF HUNGARY. FIRST OCCURRENCE OF THIS FORM-GENUS  
FROM EUROPE

M. KEDVES

Department of Botany, A. J. University, Szeged  
(Received July 31, 1982)

The Senonian sediments of the bore-hole of Csávoly-I (South Hungary) were investigated palynologically. The spore-pollen composition is different from those described from the Bakony Region (Transdanubia). The presence of *Endoinfundibulapollis distinctus* R. TSCHUDY 1975 is also a peculiarity of this assemblage, because this form-genus has been reported previously only from the Atlantic Coastal Plain of North America. It was believed that this is a North American pollen type. DR. R. TSCHUDY (United States Department of the Interior, Geological Survey, Denver, Colorado, USA) checked my determination and in a letter of April 2, 1981 he wrote the following: "From your pictures I am confident that you have found the same species from the southern part of Hungary that we have in eastern North America. In eastern North America this species is found in the Santonian, Campanian, and early Maestrichtian. I have not found it in the Aquilapollenites province."

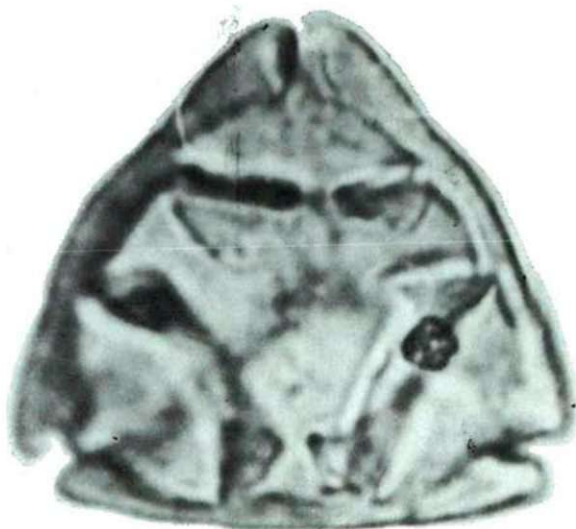


Fig. 1. *Endoinfundibulapollis distinctus* R. TSCHUDY 1975, slide: Csáv-I-2-6; 17.6/111.7, x 3000.

**Reference**

- TsCHUDY, R. H. (1975): Normapolles pollen from the Mississippi embayment. — U. S. Geol. Surv. Prof. Pap. 865, 1—42.

Address of the author:

DR. M. KEDVES  
Department of Botany A. J. University  
H-6701 Szeged, P.O. Box 657, Hungary